

## HPHT Cement Consistometer/Gel Strength Analyzer Model 415SGS

### Description

Fann HPHT Static Gel Strength Analyzer combines thickening time and static gel strength testing into one easy to use, simple to maintain instrument. Cement slurries are tested at temperatures up to 400°F and pressures up to 15,000 psi. The included software is designed to perform static gel strength tests in accordance with API specifications. The combination of API thickening time testing and static gel strength measurement make this an ideal instrument for testing Oil Well Cements. The static gel strength of cement slurry is measured using a standard paddle and in the same configuration as a thickening time test. This makes transitioning from thickening time to static gel strength testing instantaneous, simulating downhole conditions. The paddle is held in a virtually stationary position allowing for extremely precise direct measurement of static gel strength development in real time.



A solid heating/cooling jacket surrounds the slurry cup where a thermocouple is used to measure the cement slurry temperature. After completion of the test, cooling water is circulated through this cooling jacket to cool the pressure vessel. This SGS Analyzer is equipped with temperature control that is programmed through the use of a touch screen monitor.

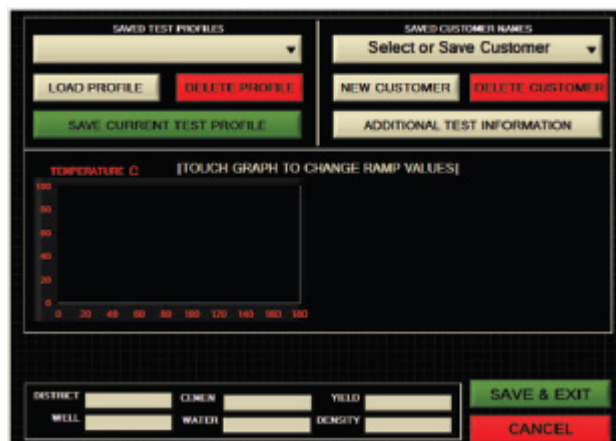
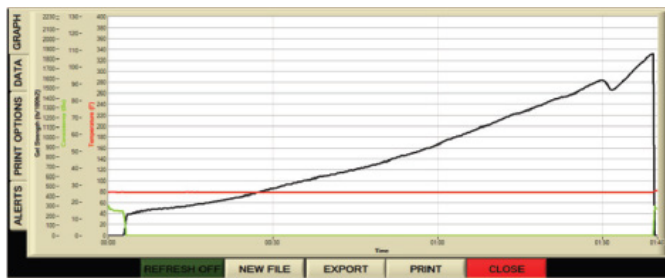
### Advantages

- Gel strength readings from 100-1000 lbf/100ft<sup>2</sup>
  - Automatic cooling after test
  - Below ambient temperature testing
  - Microsoft® Windows® 7\* OS with 180GB
  - Easy cement ejection system
  - Compact benchtop design
  - Pressure consistency displayed in real time
  - Easily exportable data into text files
  - Remote viewing capable via network
  - Magnetic drive system
  - No other computer needed
  - Direct measurement
  - 12in color touchscreen display
  - Realtime networked data acquisition
  - Electronics and plumbing easily accessible
  - Thermocouple protection against runaway heater
  - Overcurrent sensing monitors and protects against short circuits
  - Fused circuitry protects system
  - Adjustable units of measure
- \*Microsoft and Windows are registered trademarks of Microsoft Corp.

Authorized Canadian Dealer:



9415 - 27 Avenue NW | Edmonton, AB | T6N 1C9  
Tel: 780.440.0074 | TF: 1.866.448.0074  
E: info@hamdon.net www.hamdon.net



## Specifications

Electrical	
Input Voltage	230 VAC ( $\pm 10\%$ )
Input Power	1,500 W
Current	10 Amps
Input Frequency	50-60 Hz

Dimensions	
Height	33 in. (84 cm)
Width	26 in. (66 cm)
Depth	16 in. (41 cm)
Weight	125 lbs. (57 kg)

Air/Water Connections	
Water In/Out	1/4 MNPT (2)
Air Input	1/4 MNPT (1) (Max 120psi)

Drive Unit	
Drive Unit	Baldor Servo
Motor Control	Baldor Servo Drive

Heater	
Heater Power	1500 W
Heater Type	Cast Heater w/ Cooling Coils
Heater Control	SS Relay

Environmental	
Operating Temperature	32 -105 °F (0 - 40 °C)
Operating Humidity	0 - 95% non-condensing

## Ordering Information

Part No. 102538946 - HPHT Cement Consisometer/Gel Strength Analyzer 15,000 psi, 400° F  
Model 415SGS

*Fann Instrument Company offers a complete line of equipment, materials, and supplies for analyzing various drilling fluids and oil well cements in accordance with API Specifications and API Recommended Practices.*